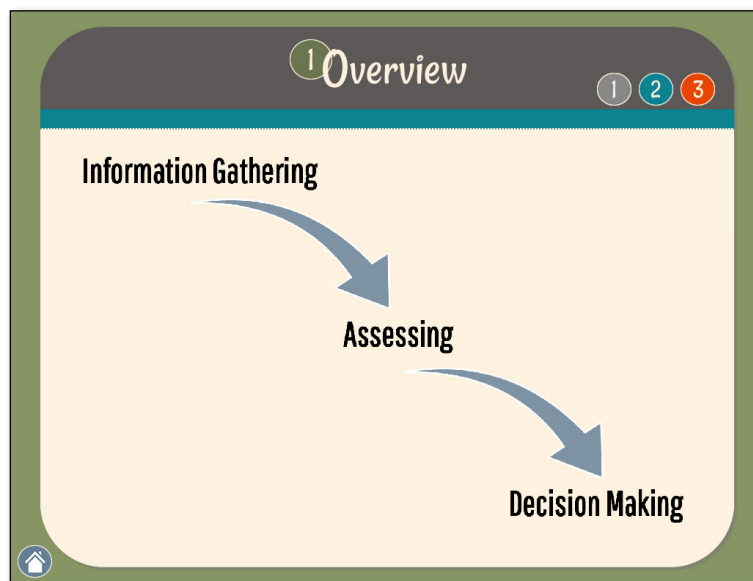


Music and Present Danger at Access



Our focus this week is assessing Present Danger Threats at Access.

At Access, a supervisor's job includes quality control of information gathering. That information supports the process of assessing Present Danger Threats and identifying possible or likely Impending Danger Threats. These, in turn, support Access decision making regarding screening and response time.

This is true After Hours, as well as during the regular business day.



Please click on the activity icons to hear about this week's activities. Then click on the links to download files.

The paper "Supervision at Access" discusses information gathering and decision making at Access.

(<http://wcwpds.wisc.edu/supsafety/resources/wk3accesspaper.pdf>)

In Application Two, you will review a CPS Report and consider the quality of information on that report. Once you give feedback on that, you will consider a second, improved report on the same family. Now your job is considering the assessment of Present Danger Threats and identification of possible or likely Impending Danger Threats. Again, be sure your justification demonstrates use of the critical thinking process.

(<http://wcwpds.wisc.edu/supsafety/resources/wk3app2.doc>)

For Application Three, you will review a worker's assessment decisions at Access.

(<http://wcwpds.wisc.edu/supsafety/resources/wk3app3.doc>)

This phone conference with your trainer will be an opportunity to discuss your work applying present danger concepts to work at Access. (<http://wcwpds.wisc.edu/supsafety/resources/wk3trainerconf.doc>)



Our decision making at Access determines whether a CPS worker will intervene in a family, based on the information reported. It requires critical professional consideration of the need to protect children and the need to respect family autonomy. Our assessment of Present Danger Threats and identification of possible or likely Impending Danger Threats contribute to that complex judgment.

Even if you don't have daily responsibility for Access, you may supervise After Hours or fill in for the Access supervisor. Solid decision making when a report comes to the agency is critical in setting the stage for all our work to come.

Hopefully, this week gives you a few more mental tools to bring to your work at Access.