

Music and Putting Present Danger Concepts to Work



This week, we start putting the present danger concepts you've been studying to work. We'll do that in a couple of ways.

First, we'll apply the critical thinking process we've been examining to information about families. You'll get practice assessing Present Danger Threats.

Second, we'll start thinking more explicitly about your role as a supervisor. The work of a supervisor is often about helping workers focus their time and attention on critical safety decision-making and intervention.



Please click on the activity icons to hear about this week's activities. Then click on the links to download files.

Application One will provide brief case scenarios and ask you to identify Present Danger Threats. Remember to base your assessment only on the information provided and avoid speculation. Your justifications are as important as your answers here, because we're really working on demonstrating critical thinking skills.

(<http://wcwpds.wisc.edu/supsafety/resources/wk2appl.doc>)

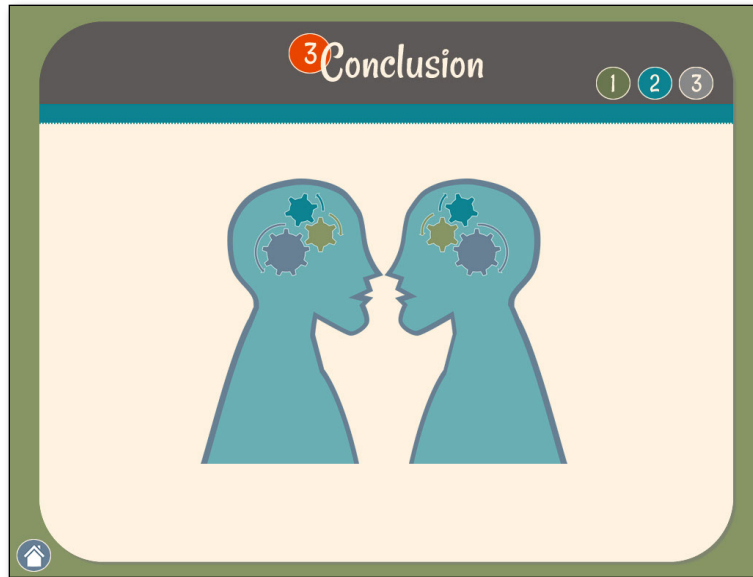
During your scheduled phone conference with your trainer, you'll get feedback on this application. If there are questions or wonderings that occur to you while you are completing the application, jot them down on your worksheet. That way they can be at the top of the agenda during your phone conference.

(<http://wcwpds.wisc.edu/supsafety/resources/wk2trainerconf.doc>)

The "Focus for Safety Intervention" paper discusses the focus for information collection in safety assessment and common errors in how workers think about the family they are assessing.

(<http://wcwpds.wisc.edu/supsafety/resources/wk2safetypaper.pdf>)

After you read the "Focus for Safety Intervention" paper, here are a few questions to discuss with your Learning Buddy. (<http://wcwpds.wisc.edu/supsafety/resources/wk2learningbuddy.doc>)



This week you will begin applying the conceptual knowledge of present danger by practicing the critical thinking process.

Hopefully, the paper provides you with some ideas about where workers need to focus to collect solid information to support that process.

In the next few weeks, we'll concentrate on application of this knowledge to specific points in the case process.